



***Sacred Foundations:***

**A Century of Faith,  
A Future of Belonging**

**CAPITAL CAMPAIGN**





## *From Our Pastor*

**DEAR FAMILY AND FRIENDS OF OUR LADY OF PERPETUAL HELP,**

OLPH has been and continues to be “a home” to many people, whether as a place to turn for safety and peace, for help when needed, or as a welcoming place to worship together. Many of our families have belonged for generations, even as we welcome new members to join our parish family. Our campus is a great gift to us, handed on so that we can live out our mission. We look forward to passing on this treasure to the generations to come.

As with any home, some needs extend beyond the typical operating costs that must be addressed to ensure the safety and security of our home. As good stewards, we rise to the challenge of meeting these needs as best we can. As outlined in the brochure, this campaign does not address all needs, but prioritizes those which are most significant at this time, and as indicated by parishioners’ feedback in the pre-campaign study.

I pray that you take some time to prayerfully read through this brochure and consider your own commitment to responding to this project with generosity and gratitude.

Sincerely in Christ,

Rev. Joel Wilson  
Pastor





## *Case Statement*

For over a century, the Catholic community of Maple Shade has gathered in sacred communion, weaving a tapestry of worship and fellowship that has sustained generations of faithful. Our spiritual home has evolved alongside our community, adapting to changing needs while preserving our cherished traditions.

Throughout our history, when called upon to strengthen our foundations, our parish family has responded with unwavering generosity. Today, we invite you to join in this sacred tradition of stewardship as we address our present needs and prepare for our future ministry.

Our vision is guided by a commitment to create a sanctuary that is not only safe but truly welcoming—a vibrant space where all God’s children can gather without barriers. This sacred mission calls us to address several pressing concerns across our campus.

## ***Nolan Hall: Renewing Our Gathering Space***

Nolan Hall has become the heart of our community life—a blessed space where we break bread together and nurture the bonds of fellowship. To ensure this vital ministry continues safely, we must install a comprehensive fire suppression system. This necessity presents an opportunity to transform the hall with new ceilings, enhanced lighting, and refreshed flooring.

Most importantly, we are answering the prayers of many parishioners by installing an elevator that will make our entire building accessible to everyone. No longer will physical limitations prevent any member of our faith family from participating fully in our communal life. This embodies Christ's teaching that all are welcome at His table.

## ***Parish Buildings: A Thoughtful Transition For Our Future***

After careful assessment and prayerful discernment, we have determined that our historic Old School Building, which began as our original church, has reached a point where renovation is no longer the most prudent path forward.

Years of faithful service have taken their toll on this beloved structure. The extensive safety upgrades, fire protection systems, structural improvements, roof replacement, and heating system modernization would require investments that exceed the building's long-term viability. As good stewards of our resources, we are called to make difficult but necessary decisions. With reverence for our past and vision for our future, we have determined that removing the current structure will allow us to create a path forward which truly serves our parish family for generations to come.

Our Parish Offices, which have undergone careful restoration over five years, require one final improvement—central air conditioning for the first floor—to complete the renewal of this iconic structure.

## ***Our Sacred Commitment***

**With faithful stewardship,  
we seek to address these needs:**

### **Nolan Hall Renewal**

- Fire suppression system with new ceiling and lighting:  
**\$100,000-\$150,000**
- Elevator installation with accessible restroom:  
**\$300,000-\$400,000**
- Gathering space enhancements (flooring, painting):  
**\$100,000-\$150,000**

### **Parish Office Completion**

- First floor central air conditioning:  
**\$50,000-\$75,000**

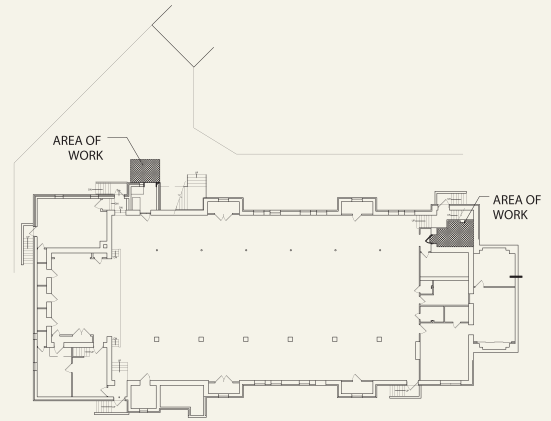
### **Parish Center Transformation**

- Demolition and removal of Old School Building  
**(\$500,000 - \$600,000)**

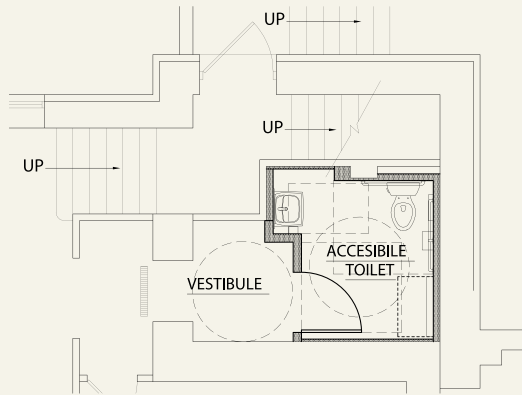
As we honor our past and embrace our future, we invite you to prayerfully consider how you might participate in this sacred journey. Together, we will ensure that our spiritual home remains a beacon of faith, accessibility, and community for generations to come.

# Nolan Hall

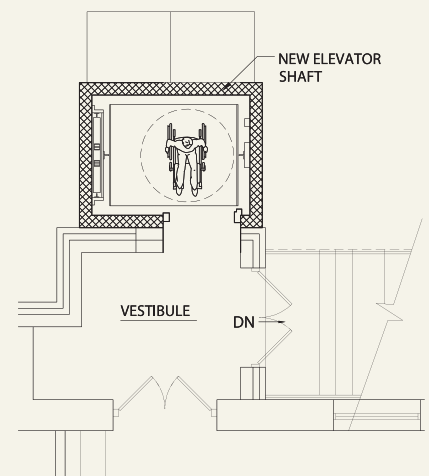
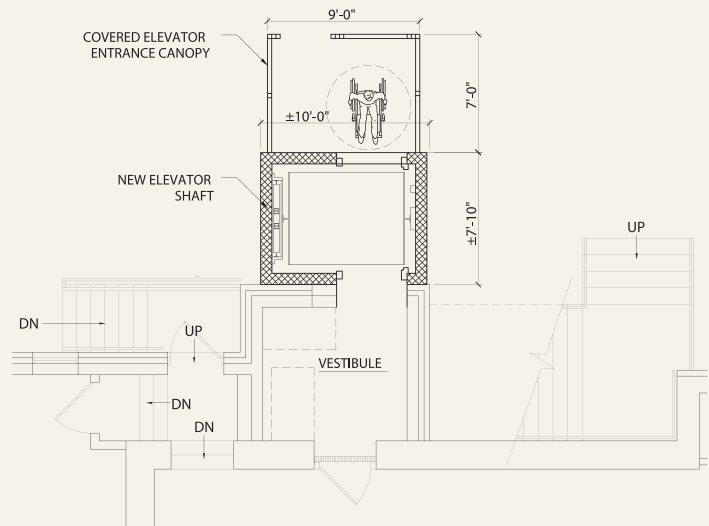
## Accessibility Renovation Design Concept



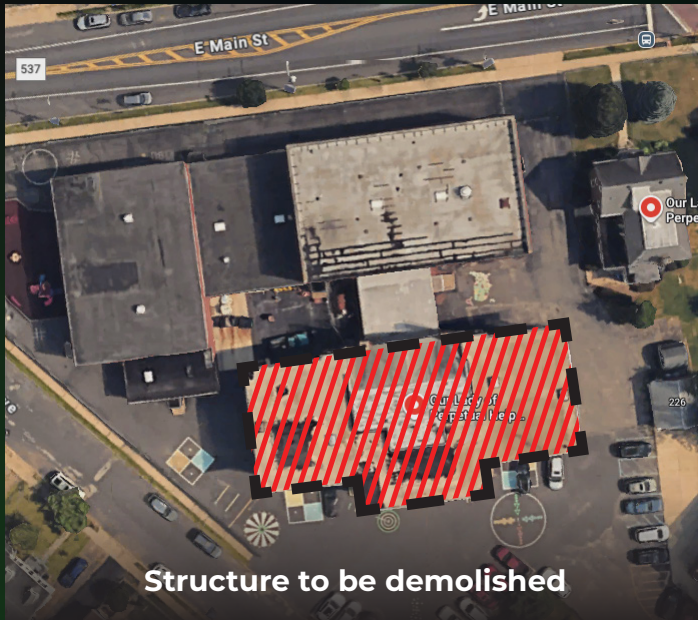
Key Plan



Bathroom Floor Plan



Exterior Elevation



Structure to be demolished



Nolan Hall



Nolan Hall



Parish Office



Nolan Hall



Nolan Hall



## ***Our Parish Mission***

Building up the Body of Christ

## ***Our Parish Vision***

As members of one body, we strive eagerly to follow our Lord, make disciples, seek out the lost, share fellowship, love our neighbor and above all worship God.

## ***Our Campaign Prayer***

O God, our refuge and our strength, be with us in our labors, for we remember that if the Lord does not build the house, in vain do the builders labor. Assist our parish in this shared work of building, and renew our commitment to Jesus and his mission. Bless, O Lord the work of our hands. We ask all this through Christ our Lord.

***Amen.***

## *Giving Plans to Consider*

### **WE ASK THAT YOU CONSIDER MAKING A THREE-YEAR**

pledge commitment to this campaign. This pledge would be in addition to your regular Sunday offertory contributions. For the gift to the campaign, you may choose monthly, quarterly, semi-annual or annual payments to fulfill your pledge. We are asking our entire parish family to consider a minimum sacrificial pledge over the next 36 months of \$3,000. If necessary, arrangements can be made over a different length of time. While we welcome gifts at levels not listed below, let this be your guide in determining your support.

### *3 Year Pledge Chart*

<b>TOTAL PLEDGE</b>	<b>10% DOWN</b>	<b>ANNUAL (3)</b>	<b>SEMI-ANNUAL (6)</b>	<b>QUARTERLY (12)</b>	<b>MONTHLY (36)</b>
\$250,000	\$25,000	\$75,000	\$37,500	\$18,750	\$6,250
\$100,000	\$10,000	\$30,000	\$15,000	\$7,500	\$2,500
\$50,000	\$5,000	\$15,000	\$7,500	\$3,750	\$1,250
\$25,000	\$2,500	\$7,500	\$3,750	\$1,875	\$625
\$15,000	\$1,500	\$4,500	\$2,250	\$1,125	\$375
\$10,000	\$1,000	\$3,000	\$1,500	\$750	\$250
\$5,000	\$500	\$1,500	\$750	\$375	\$125
\$3,000	\$300	\$900	\$450	\$225	\$75
\$2,500	\$250	\$750	\$375	\$187.50	\$62.50
\$2,000	\$200	\$600	\$300	\$150	\$50



## Ways to Give

### **PLEDGES**

Pledge commitments shall be counted toward the campaign goal at the full face value of the pledge when properly documented by a signed pledge card or written letter of intent. To be counted in full toward the campaign goal, the pledge must be payable in full within a period of up to three years from the moment the redemption period begins. Pledges can be made via checks or cash.

### **OUTRIGHT**

Those who wish to make an outright gift should make their check payable to Our Lady of Perpetual Help Catholic Church and specify Capital Campaign on the memo line.

### **SECURITIES**

Appreciated securities offer donors an income tax deduction for a charitable gift and donors may avoid capital gains tax that could be incurred through a sale. Please consult your tax accountant for advice.

### **MATCHING GIFTS**

You may be able to double the impact of your gift. Many employers have matching gift programs and will match any charitable contributions made by employees, retirees, and employee spouses. Please check with your Company's Human Resources Dept. to see if your campaign gift qualifies.

*In addition to a pledge, you might consider these other ways to give:*

### **BEQUESTS**

Individuals may make a gift in a specific amount or a percentage of his or her estate to support Our Lady of Perpetual Help Catholic Church. Please consult your financial advisor.

### **LIFE INSURANCE**

Our Lady of Perpetual Help Catholic Church may be named as the owner and beneficiary of a new policy, or ownership of an existing policy may be transferred to the parish.

### **REAL ESTATE**

Real estate allows donors to both claim an income tax deduction for the value of the gift and avoid paying a capital gains tax on the appreciation of the property. Please consult your financial advisor.

### **LIFE INCOME GIFTS**

One can make a gift of cash, securities, or other assets to Our Lady of Perpetual Help and receive both incomes for life and a charitable tax deduction in return. A variety of trusts and annuities facilitate such gifts. Upon the donor's or designated beneficiary's death, or at another prearranged time, the trust terminates and the assets are transferred to the parish. Please consult your financial advisor.

## *Frequently Asked Questions*

### **HOW MUCH AM I EXPECTED TO GIVE?**

Your pledge is a very personal decision. This campaign is a unique opportunity for the church to continue as a vibrant place to worship. Ultimately, we ask that you consider your sacrificial gift in terms of your overall stewardship to our community, and what these projects mean to you, your family, and the future of our parish. We have been blessed by the sacrifices of those who came before us.

### **HOW WERE THE PROJECTS TO IMPROVE OUR PARISH FACILITIES DETERMINED?**

The building projects were determined by the parish leadership based on the current and future needs of Our Lady of Perpetual Help Catholic Church. The proposed projects were then tested through personal interviews, focus groups, and a survey (made available in pews and online) of the pre-campaign study conducted by Ruotolo Associates. Building cost estimates were provided by contractors, and aligned to our goal.

### **WHEN WILL PENDING PROJECTS BEGIN?**

The duration of the capital campaign will be approximately eight months, which will provide sufficient time for donors to prayerfully consider their pledge amount. A pledge redemption period of 36 months will follow the capital campaign. Projects will be executed as funds are made available through the redemption period of the campaign. Periodic reports will be provided to our supporters.

### **HOW LONG WILL I HAVE TO MEET MY PLEDGE?**

Making a pledge commitment as opposed to a one-time gift allows you to make a larger gift to this campaign during a designated period of time. We are asking parishioners to fulfill their pledges over a three-year period.

### **WILL GIFTS TO THE CAMPAIGN BE ASSESSED BY THE DIOCESE?**

All funds raised in this Parish Capital Campaign are exempt from all assessments and taxes from the Diocese.

### **I ALREADY GIVE TO THE PARISH. WHY SHOULD I SUPPORT THE CAMPAIGN?**

A campaign supports special projects and is separate from the regular Mass collections. The parish is grateful for all donations it receives throughout the year. Your generous weekly contributions are needed every week for regular operating expenses and are not designated for capital improvements or repairs. Ideally, the parish's ordinary income should be at least equal to its ordinary expenses (utilities, supplies, services, employee salary and benefits, insurance, etc.). Capital projects are considered extraordinary expenses that need additional funding.

### **IS MY GIFT TAX DEDUCTIBLE?**

Yes. The amount contributed is deductible to the full extent provided by the law.

### **HOW CAN I MAKE MY PAYMENTS?**

We have developed a three-year pledge chart to help you identify a pledge level that you can reach. You will see that you can choose to fulfill your pledge in a number of ways. Once the redemption phase begins, you will receive payment reminders before each payment is due that will include a balance.

### **WILL MY GIFT BE RECOGNIZED?**

In addition to what is outlined in the brochure, unless requested otherwise, all contributors to the campaign will be included in an alphabetical listing of donors in our parish bulletin.

### **WHAT HAPPENS IF I AM UNABLE TO COMPLETE MY PLEDGE?**

A pledge to the campaign is a faith promise; it is not legally binding. OLPH is dependent on the generosity and ability of its parishioners and community friends to complete these projects. While we pray that you will not experience any financial challenges, should your situation change, we will work with you to accommodate any unforeseen personal situations.



## *Building Up the Body of Christ*

236 E. Main Street • Maple Shade, NJ 08052

856-667-8850 • [info@olphparish.com](mailto:info@olphparish.com)

***[olphparish.com](http://olphparish.com)***